

KARIBAN

REFERENCE : K232

SIZES : S_M_L_XL_XXL_3XL

COMPOSITION :

Main fabric : Polyester / Combed Cotton pique 65/35 - 220

65%polyester / 35%cotton

Main fabric : Polyester / Combed Cotton pique 65/35 - 220 For
contrasted yokes 65%polyester / 35%cotton

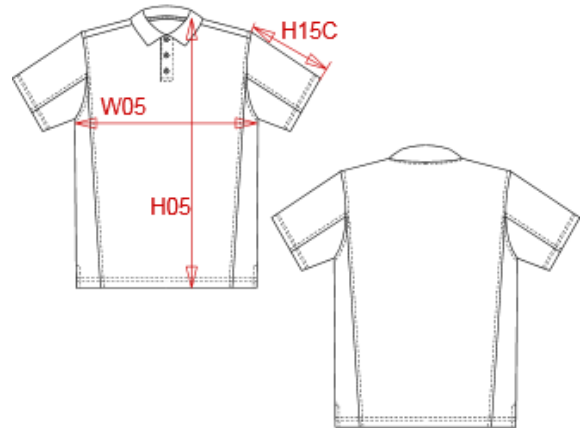
WEIGHT :

Main fabric : 220 gsm

Main fabric : 220 gsm

ARTICLE WEIGHT :

300 gr/pc



DESCRIPTION								COLORS	PANTONE SERIGRAPHIE
Français : Polo bicolore								White / Red	White / 200C
English : Bi-colour short sleeve polo shirt								Navy / White	433C / White
Nederlands : Tweekleurige polo								White / Royal blue	White / 287C
Deutsch : Zweifarbiges polohemd								Red / Black	200C / Black
Español : Polo piqué bicolor								Black / Lime	Black / 367C
Italiano : Polo bicolore								Navy / Sky blue	433C / 5425C
Português : Polo pique bicolor								Black / Slate grey	Black / 424C
MEASUREMENT								Black / Orange	Black / 1585C
Description	S	M	L	XL	XXL	3XL		Light grey / Red	416C / 200C
H05 (M) Hauteur totale / Total height	70	72	74	76	78	80		Dark grey / Orange	447C / 1585C
W05 (M) 1/2 largeur poitrine / 1/2 chest width	50	53	56	59	62	65			
H15C (M) Longueur manche courte / Short sleeve length	22,25	23	23,75	24,50	25,25	26			
CARE LABEL									
PACKING									
Box	25 pcs / box S => L:60cm W:40cm H:15cm GW:7.65kg NW:6.15kg M => L:60cm W:40cm H:15cm GW:8kg NW:6.5kg L => L:60cm W:40cm H:15cm GW:8.55kg NW:7.05kg XL => L:60cm W:40cm H:15cm GW:8.95kg NW:7.45kg XXL => L:60cm W:40cm H:16cm GW:9.40kg NW:7.90kg 3XL => L:60cm W:40cm H:16cm GW:9.80kg NW:8.30kg								